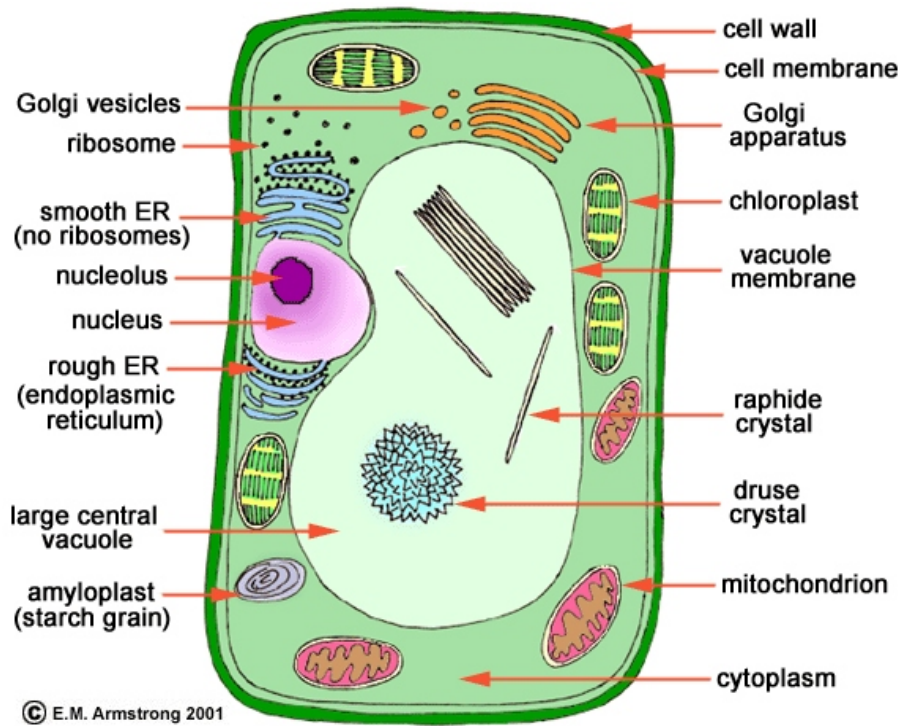


Science 8

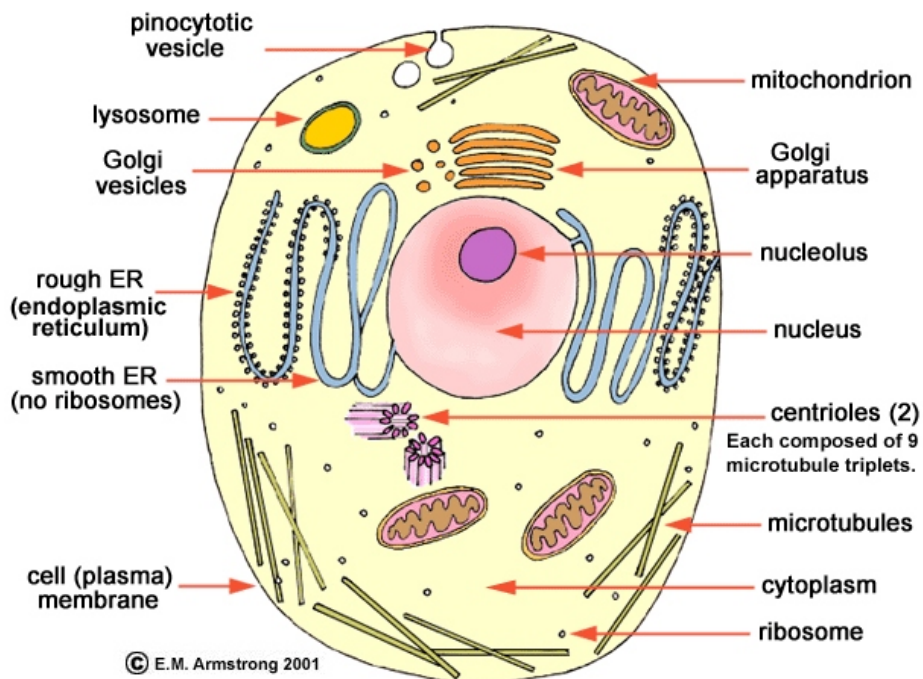
Unit Four: Cells, Tissue, Organs, and Systems

“The Plant Cell and Animal Cell”

The Plant Cell



The Animal Cell



Science 8

Unit Four: Cells, Tissue, Organs, and Systems

“The Plant Cell and Animal Cell”

1.) Describe the general shape of a plant cell. _____.

2.) Describe the general shape of an animal cell. _____.

3.) Which parts of a cell do the plant and animal cell have in common?

4.) How does the plant and animal cell differ?

6.) Briefly explain the function of the following cell parts:

- Nucleus _____
- Mitochondrion _____
- Cytoplasm _____
- Cell Membrane _____
- Endoplasmic reticulum _____

7.) List seven different types of cells.
